

Chemistry - maXis HPLC-ESI Accurate Mass Report

Analysis Info

Analysis Name D:\Data\Chemistry\2014\Oct 14\Gelator 24_GA4_01_14966.d
Method soton lcms pos 120 to 1500.m
Sample Name Gelator 24
Comment Analyst: JMH

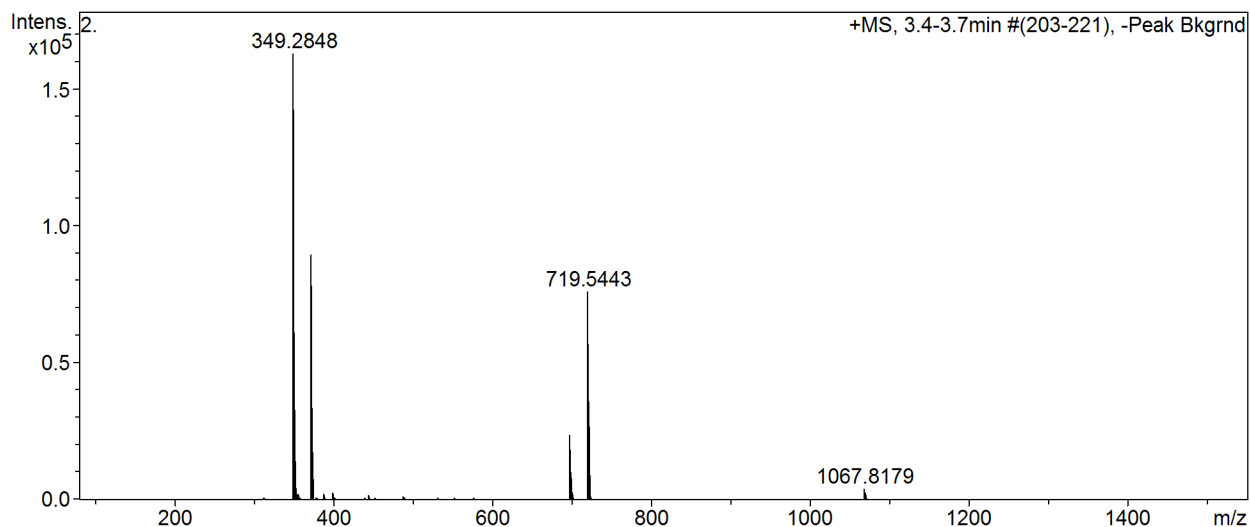
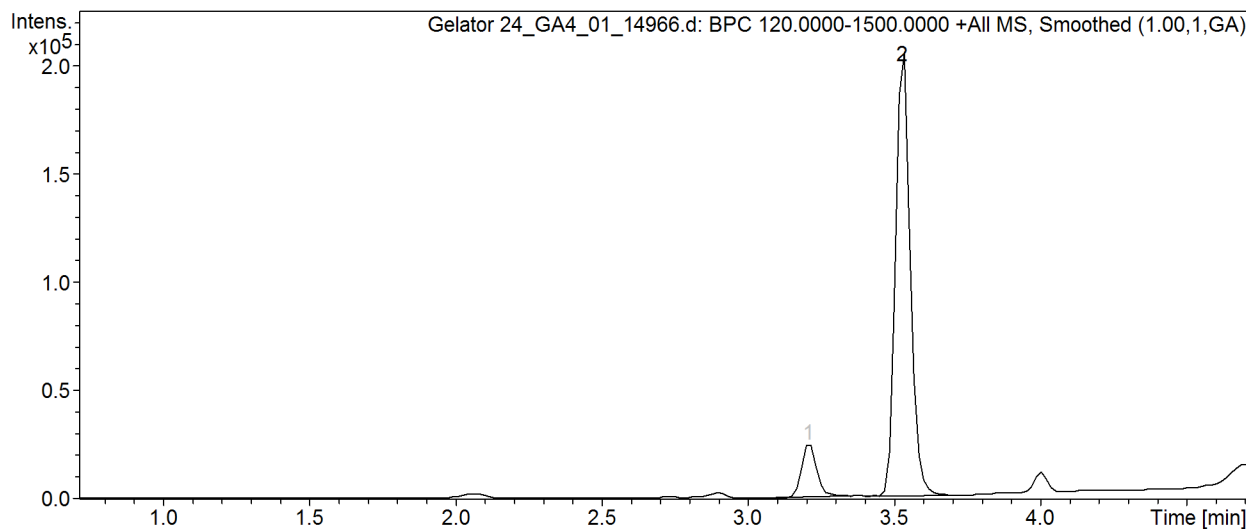
Acquisition Date 23/10/2014 12:40:33

Operator MSWEB@SOTON.AC.UK
Instrument / Ser# maXis 17

Acquisition Parameter

Source Type	ESI	Ion Polarity	Positive	Set Nebulizer	2.0 Bar
Focus	Not active	Set Capillary	4000 V	Set Dry Heater	200 °C
Scan Begin	120 m/z	Set End Plate Offset	-500 V	Set Dry Gas	8.0 l/min
Scan End	1500 m/z	Set Collision Cell RF	300.0 Vpp	Set Divert Valve	Waste

Cmpd 2, 3.5 min



Chemistry - maXis HPLC-ESI Accurate Mass Report

Meas. m/z	Formula	m/z	err [ppm]	err [mDa]	# Sigma	mSigma	rdb	e ⁻ Conf	N-Rule
349.2848	C 21 H 37 N 2 O 2	349.2850	0.4	0.1	1	4.4	4.5	even	ok
371.2668	C 21 H 34 F 3 N 2	371.2669	0.1	0.0	1	10.3	4.5	even	ok
	C 19 H 31 N 8	371.2666	-0.6	-0.2	2	10.4	8.5	even	ok
	C 21 H 36 N 2 Na O 2	371.2669	0.2	0.1	3	10.8	4.5	even	ok
	C 18 H 38 F 2 N 2 Na Si	371.2665	-1.0	-0.4	4	37.2	0.5	even	ok

Samples were analysed using a MaXis (Bruker Daltonics, Bremen, Germany) mass spectrometer equipped with a Time of Flight (TOF) analyser. Samples were introduced to the mass spectrometer via a Dionex Ultimate 3000 autosampler and uHPLC pump. Gradient 2% methanol (0.1% formic acid) to 100% methanol (0.1% formic acid) in seven minutes. Column, Kinetex C18 (Phenomenex) 1.7 micron 50 x 2.1mm. High resolution mass spectra were recorded using positive/negative ion electrospray ionisation.